

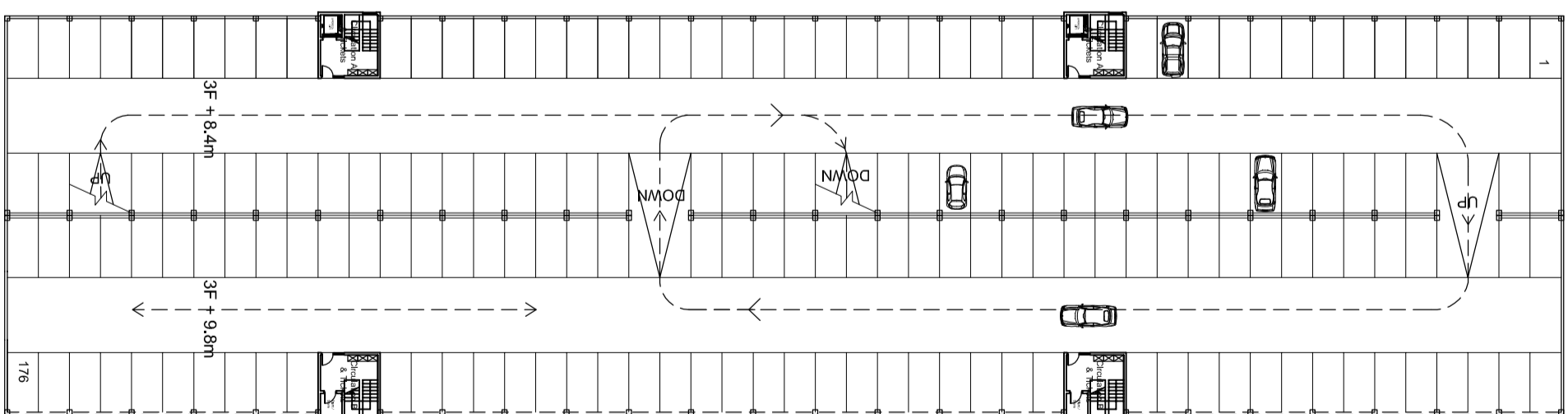
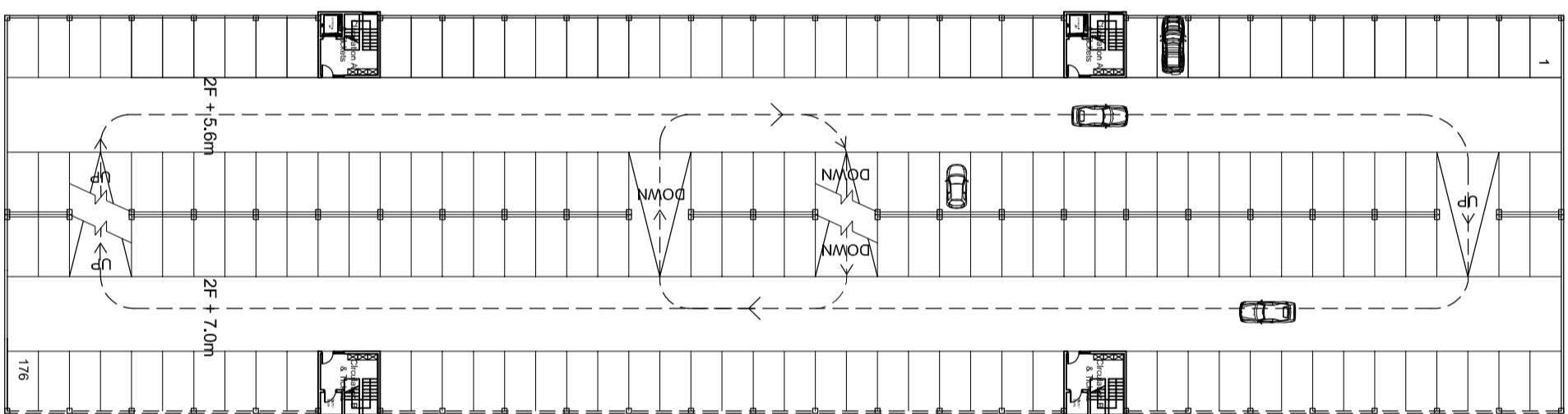
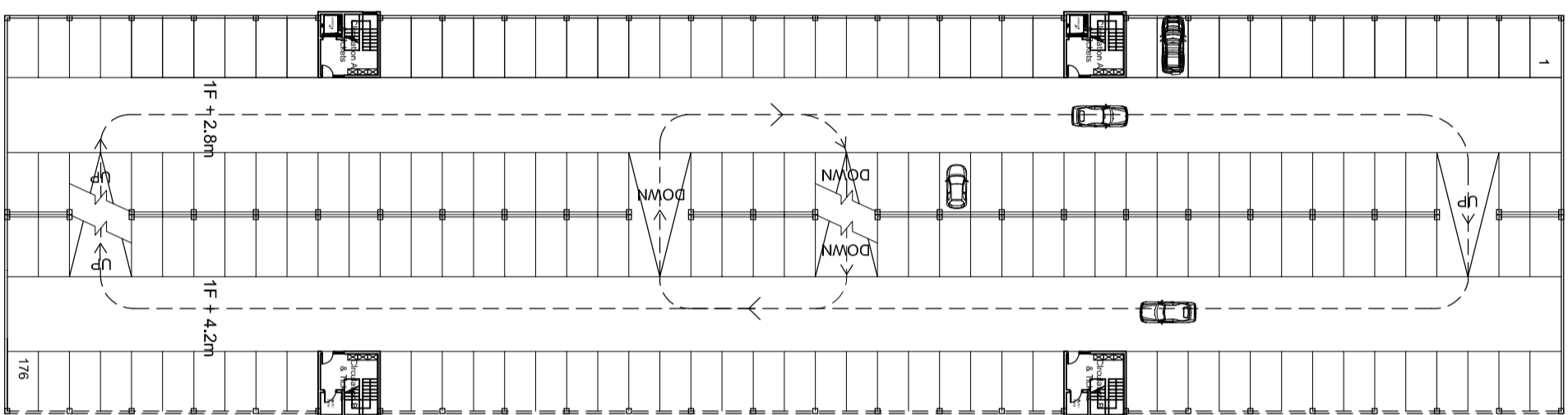
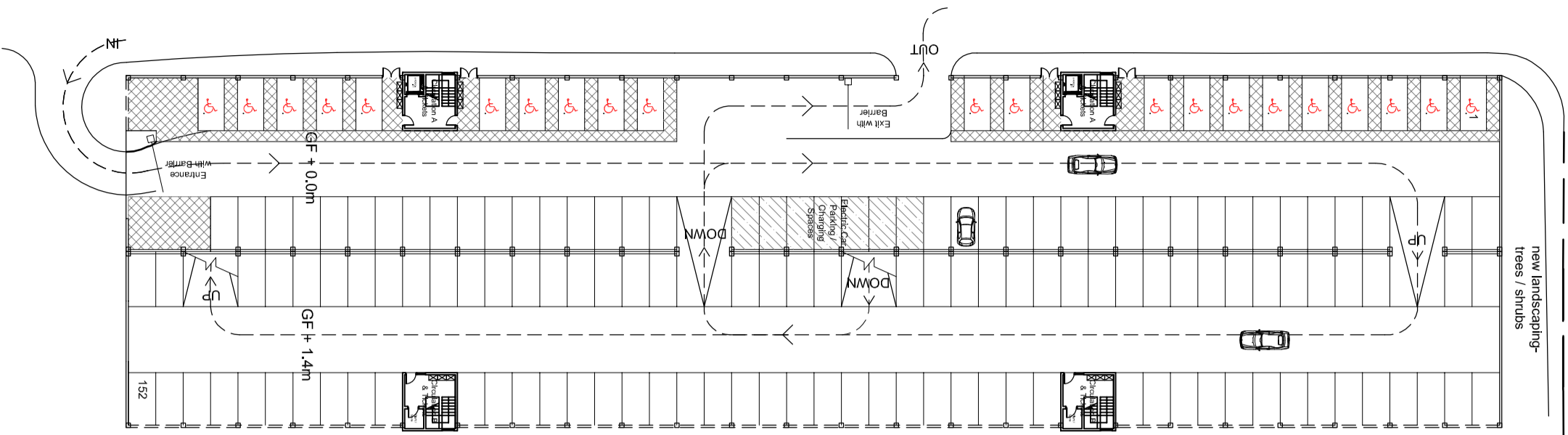
IMPORTANT

- © This drawing is copyright and remains the property of this practice
- Do not scale this drawing
- All dimensions to be checked on site
- Position of existing services to be confirmed prior to proceeding

REVISION STATUS

- S - Information Issued for feasibility or scheme design
- T - Information Issued for tender purposes only
- C - Information Issued for Construction
- NB: Only those drawings containing a C revision to be used for construction

NOTES



Existing Car Parking Spaces on Site:
210

Total Car Parking Spaces Proposed:
680 (inc. 21 Disabled Parking Spaces)

Net increase, car parking spaces:
470

REVISION	DATE	DESCRIPTION

CLIENT
Lancashire Teaching Hospitals NHS Trust

PROJECT
Additional Car Parking, Royal Preston Hospital
Shirone Green Lane, Fulwood

DRAWING TITLE
Proposed Floor Plans

SCALE	DATE	DRAWN	CHECKED
1:500@A2	OCT '14	MK	BC

DWG NO. 5154 - 104

REVISION 52

FWP
F W P
7 RIBBL ESPALE PLACE
PRESTON PR1 3NA
T 01772 259824
F 01772 259824
E mail@fwp.co.uk
www.fwp.co.uk
Frank Whitham Partnership Group